

AFTERCARE INSTRUCTIONS

Excessive exposure to water will deteriorate the furniture. Wipe away any water splashes or condensation after use.

All bathrooms should be well ventilated, if needed, with a suitable extractor fan.

Clean with a soft damp cloth only.

Use a wax free polish if one must be used.

For removal of lime scale deposits use a suitable cleaner.

CUSTOMER SERVICE

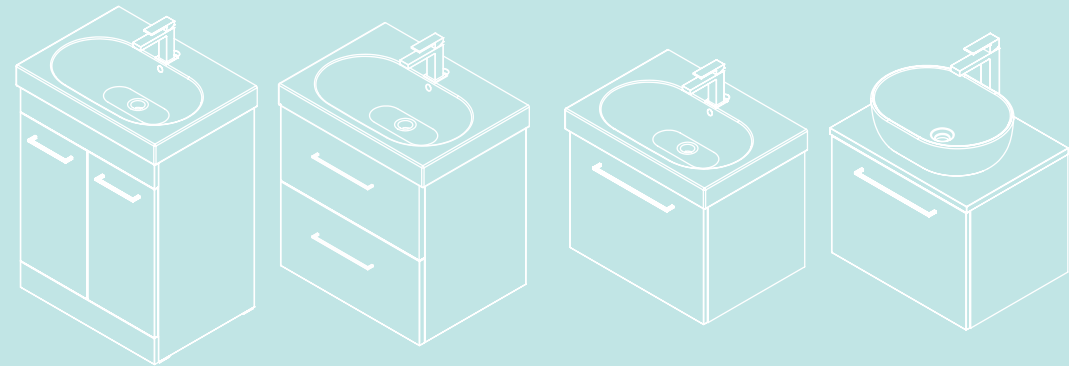
t: +44(0)208 686 5100
e: technical@saneux.com

4 Imperial Way
Croydon CR0 4RR

www.saneux.com

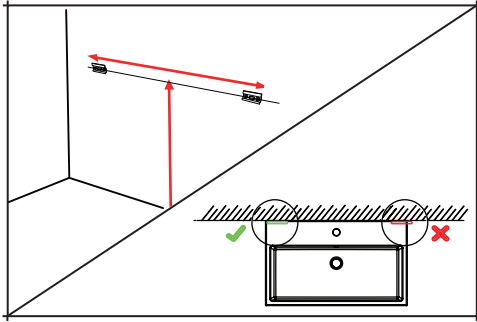
AUSTEN

INSTALLATION INSTRUCTIONS



AU050F - AU050W - AU050W2
AU060F - AU060W - AU060W2
AU072F - AU072W - AU072W2

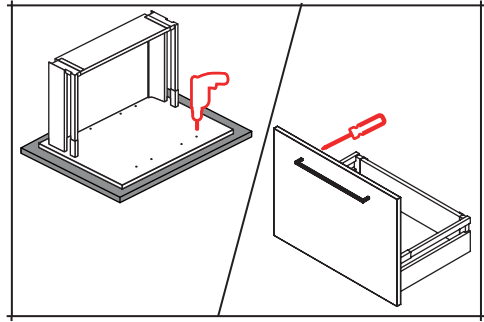
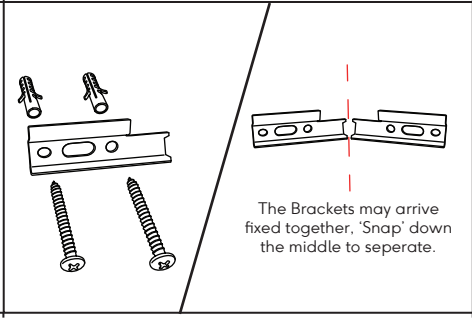
saneux



Furniture Installation.

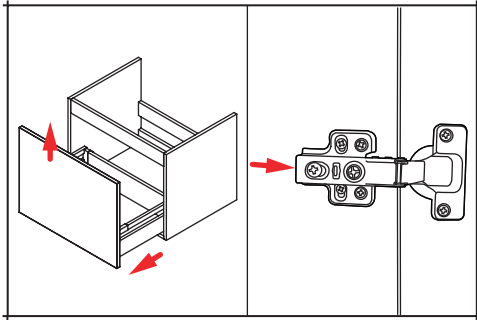
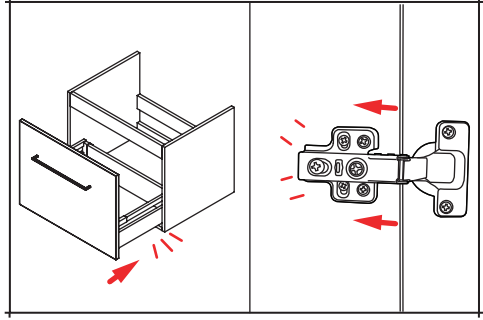
Mark the location of both mounting plates ensuring that they are positioned inside the side panels. The recommended height for the unit including basin is 850mm.

Drill 2 holes per mounting plate using an 8mm drill bit to a depth of 55mm. The fixings supplied are for solid walls. For hollow or stud walls use specialist fixings.

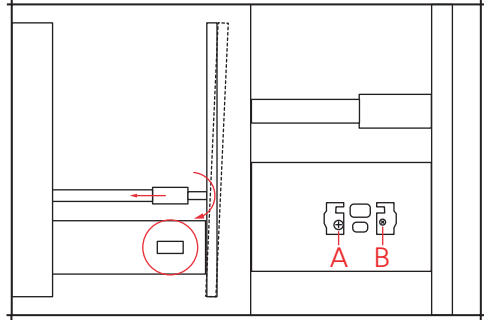


To ensure the paint does not come off the front panel, place the drawer/door (front face down) on a piece of wood. Drill the pilot holes for the handle width selected. Using a screw driver and the screws provided with the handle, secure the handle to the drawer/door front.

Return the drawer/doors to their original location. Place the drawer on the guides and push it back until it clicks. Check that it operates smoothly. For door units simply locate the hinges back on their base plates ensuring they click into position.

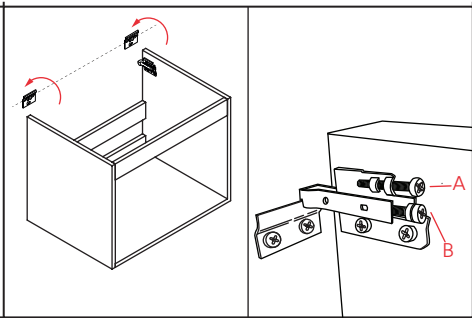


Before mounting the unit, we recommend removing the drawer/doors. To remove the drawer, it should be fully extended and pulled upwards. The entire drawer will release from the guides. For door units, press the button at the back of the hinge. The entire door and hinges will release from the carcass.



The angle of the drawer front can be adjusted by rotating the drawer bar. The width and height of the drawer can also be adjusted. Screw A adjusts the drawer horizontally. Screw B adjusts the drawer vertically.

Secure the unit to the mounting plates using the hooks fitted on the unit. The unit can then be adjusted. Screw A adjusts the height. Screw B adjusts the depth.



Secure the basin to the unit using a silicone sealant. If installing the countertop, make sure to use the brackets and screws supplied. **IMPORTANT: Seal the edges between the basin/countertop and the furniture.**

